

## Legislature-Requested iRIDE Study Confirms Need for Transit

1000 Friends' members have advocated for a more balanced transportation system in Iowa for years. Members are encouraged to learn more about the Metropolitan Planning Organization (MPO) or Council of Governments (COG) in their part of the state that determines decisions concerning local transportation options. In 2008 we asked members to voice opposition to our current TIME21 Transportation Plan that gives little attention to infrastructure repair or transit options and focuses on new and widened roads.

The 2008 Iowa Legislature approved TIME 21, but directed the Iowa Department of Transportation, in conjunction with the Iowa Office of Energy Independence and the Iowa Department of Natural Resources to conduct a study to:

1. Quantify the amount of revenue available to support public transit.
2. Determine whether current revenue is sufficient to meet future needs.
3. Assess how well the state's public transit network supports the current and expanding mobility needs of the state's senior population.
4. Document the transit improvements needed to meet the state's energy independence goals.

LaVon Griffieon represented 1000 Friends on the iRIDE Advisory Committee which helped guide the study that was completed in December. A final report has been submitted to the 2010 legislature.

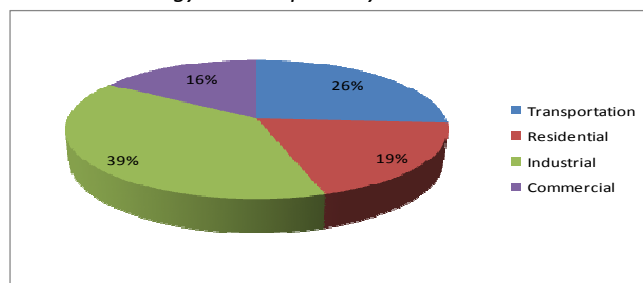
The final report is available at: <http://www.1000friendsofiowa.org/images/PDF/final%20funding%20study%20report%2012-15-09.pdf>

The executive summary is available at: <http://www.1000friendsofiowa.org/images/PDF/exec%20summary%20final%2012-15-09.pdf>

1000 Friends is pleased with the final report. Section 7 calls for coordination of land use decisions and transportation plans. The report suggests that residential housing that has access to public transit be favored above auto-dependent

subdivisions when plans are being approved. The study also suggested that access to public transportation be a determining factor when locating new medical facilities and asked that the Livable Communities concept be promoted in the land use decision-making process.

*2007 Iowa Energy Consumption by Sector*



*Continued page 7*

<b>iRIDE Study Confirms Need for Transit.....</b>	<b>Page 1</b>
<b>Letter From the President.....</b>	<b>Page 2</b>
<b>Linda's Line.....</b>	<b>Page 3</b>
<b>Thank You Madella!.....</b>	<b>Page 3</b>
<b>2009 Best Development Award Winners ....</b>	<b>Pages 4-5</b>
<b>Restoration Project in Waterloo .....</b>	<b>Page 6</b>
<b>Cedar Falls Council Passes Flood Ordinance ...</b>	<b>Page 6</b>
<b>Public Policy Updates/Action Alerts.....</b>	<b>Page 8</b>
<b>Your Community.....</b>	<b>Page 8</b>

## 1000 Friends of Iowa

Founded 1998

### Board of Directors

Mary Ellen Miller, President

Mason City

Mary Ellen Warren, Vice President

Waterloo

LaVon Griffieon, Treasurer

Ankeny

John Morrissey, Secretary

Des Moines

Erwin Klaas, Ames

Doug Adamson, Des Moines

Dale McKinney, Sioux City

Mary Brubaker, Des Moines

Elizabeth Holland, Chicago

Karen Howard, Iowa City

Laurie Belin, Windsor Heights

Craig Malin, Davenport

Stephanie Stegeman, Des Moines

Ray Meylor, Ankeny

Gordon Mills, Dubuque

### Advisory Council

Ed Fallon, Des Moines

David Hurd, Des Moines

Stu Huntington, Ames

Fred Kirschenmann, Ames

Lee Kline, Des Moines

Andy McKean, Anamosa

Jon Muller, Des Moines

### Staff

Linda Gobberdiel, Executive Director

Crystal Leto, Office Manager

1000 Friends of Iowa is a state-wide non-profit organization founded in 1998 based in Des Moines, Iowa.

1000 Friends of Iowa promotes responsible development that

- Conserves and protects our agricultural and natural resources
- Revitalizes our neighborhoods, towns and cities, and
- Improves the quality of life for future generations

3850 Merle Hay Road  
Suite 605

Des Moines, IA 50310

Phone 515-288-5364

Fax 515-288-6362

[kfoi@1000friendsofiowa.org](mailto:kfoi@1000friendsofiowa.org)

[www.1000friendsofiowa.org](http://www.1000friendsofiowa.org)

# Letter From the President

by Mary Ellen

## It's January, that means the Iowa Legislature is in session

Yup, the legislature is back at work (and setting an 80-day session this year instead of 100 days) so this is a good time to remind all 1000 Friends of Iowa members of the importance of keeping in touch with your local legislators. Our board and staff monitor pending and proposed bills and we send out Action Alerts when we feel the need for your one-on-one advocacy on an issue. These Alerts ask you to get in touch with your state representative and senator to let them know our stand on an issue. We will give you "Talking Points" to help you make your case; we do not send you a "suggested" letter as we want you to personalize your advocacy. This can be done by phone, email, postal service or in person.



Over the years I have found some basic "Tips for Lobbying Your Legislator" to be true:

- Do not try and be an expert on all the issues of concern. Pick the issue you are most passionate about, study it and become articulate on what it is you want to see happen.
  - Most legislators hold weekend public meetings during the session; these are excellent opportunities to speak with them. This can be done during the public meeting or you can ask for a few minutes afterward.
  - Give your legislator background material they can study later, they cannot be experts on everything and appreciate knowledgeable advocates.
  - Make your case succinctly, personalize the issue; let them know why it matters to you.
  - Be respectful, they are public servants with lots of issues on their plate and many constituents. Let them know you appreciate their time. Thank them for listening.
  - Legislators send out e-newsletters; get on their mailing lists to more fully appreciate their priorities and also to learn their meeting schedules.
- Constituents influence in two ways: by their numbers and by the effectiveness of their personal advocacy. Both are important; make sure our message is heard.

A great resource is [www.legis.state.ia.us](http://www.legis.state.ia.us) Here you can find your legislators, their committee assignments, bill activity, committee schedules, etc. Take some time to look it over. Finally, remember this, our democratic republic was founded upon the principle of citizen involvement. Each person has a voice and it is our right and freedom to use it. It is up to each of us to speak our message. It is as simple as that.

In your service,

Mary Ellen Miller  
Board President

## Linda's Line

Dear Friends,

The legislature is officially in session and the Rebuilding Iowa Office is working on a proposal for a land use bill. The bill has the potential to truly bring about much needed change. We will continue to monitor the proposed bill, and will keep you informed with updates through our Action Alerts. Other current opportunities include commenting on the clean water revolving fund, attending and providing input at Department of Transportation meetings, and commenting on water quality issues for recreational lakes in Iowa.

**If you have not received any Action Alerts from us recently, you might send me a quick email ([director@1000friendsofiowa.org](mailto:director@1000friendsofiowa.org)) with your name and current email so we can check our records.**

rate on planning a community food project. The objective is to create a sustainable food system to provide locally grown, fresh foods to low-income populations in the Des Moines metro area. The goal is to eventually extend the system to adjacent communities and throughout the state. The success of this project relies heavily on the involvement of individuals living in low-income areas during the planning stage. The passion for protecting our rich Iowa soil and growing more food locally for purchase and consumption by Iowans was truly inspiring.

In our 1000 Friends of Iowa office, Crystal Leto and I have been working to improve the effectiveness of our operations behind the scenes. One area desperately needing our attention and & updating is our technology. We are in the process of obtaining a new system to track our members in order to manage and grow the membership more effectively and efficiently.

Finally, 1000 Friends of Iowa recently met the membership goals necessary to receive matching gifts from Cole-Belin and the Leighty Foundations! In 2010, we hope to reach the match level prior to December 31<sup>st</sup> to reduce the last minute pressure. Thank you to those individuals who stepped up with major donations to help us secure the additional funding!

Linda Gobberdiel  
Executive Director



## Thank You Madella!

By Linda Gobberdiel

Madella Smith, a Drake University student, selected 1000 Friends of Iowa for her fall 2009 internship. Madella grew up on a farm in northwest Iowa which led to her interest in land use and concern for land use related issues. Madella spent her time researching and updating facts in several pieces of literature. It was a pleasure to work with her, and 1000 Friends greatly benefited from Madella's work.

"Iowa Farm Stats" was one piece of 1000 Friends literature Madella worked on. In addition to updated the facts & figures, she redesigned to make the content more reader-friendly. Following are stats related specifically to food production in Iowa:

1. According to two studies (conducted by [Sales and Marketing Magazine](#) the Iowa Department of Agriculture and Land Stewardship), Iowans spend between \$6 and \$8 billion a year on food.
2. 86% of Iowa's food is brought into Iowa from out of state.
3. In 1929 Iowa produced vegetables on 52,915 acres. Today, 11,895 acres are used in vegetable production.
4. In 1929 Iowa had 63,185 acres of orchards. Today, only 2,724 acres are orchards.
5. Iowa was once a leader in food production and processing.
  - ⇒ In 1924, Iowa processed locally grown sweet corn at 58 canning factories in 36 counties, leading the world in canned sweet corn production.
  - ⇒ Madison County farmer Jesse Hiatt discovered the Delicious apple near Peru, IA in the 1870s. He called the variety Hawkeye.
  - ⇒ In the 1920s, the Jonathon apple grown in Harrison County was thought to be one of the best varieties in the country.
  - ⇒ Scott County became one of the two most prolific onion-producing areas in Iowa after the Civil War.
  - ⇒ Sac and Ida counties became leading popcorn producers in the 1920s.
  - ⇒ In the 1930s, SE Iowa was one of three primary sweet potato growing regions in the US
  - ⇒ For more info on Iowa's past production of food visit: [www.leopold.iastate.edu/pubs/staff/taste/taste.htm](http://www.leopold.iastate.edu/pubs/staff/taste/taste.htm)

*Continued on page 7*



## 2009 Best Development Award Winners!

1000 Friends of Iowa established the Best Development Awards in 2001 to recognize the development projects or policies of governments, companies, and individual Iowans that reflect the smart growth principles. The winners are models of responsible development practices – which enhance the community, protect the environment, and preserve our quality of life for future

We are pleased to recognize the following winners of the 2009 Best Development Awards:

### **New Commercial/Civic:** Marshalltown Public Library, Marshalltown



105 West Boone Street  
Marshalltown, Iowa 52550  
641.724.5278

The Marshalltown Public Library was selected to receive the award for Best New Commercial/Civic Development due to the Library's commitment to staying in the city center, creating urban open space, and developing the first Iowa LEED Certified Public Library.

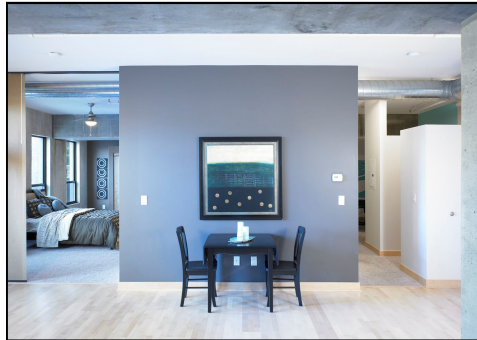


Marshalltown Public Library Award Presentation: Erv Klaas, LaVon Griffieon, Allan Thoreson, Pat Higby,

### **New Residential:** Court Avenue Lofts, Des Moines



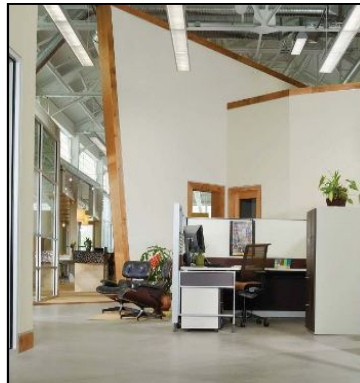
The Court Avenue Lofts was selected to receive the award for Best New Residential Development due to the project's dedication to provide infill urban housing in the core of Des Moines and facilitating an active walkable environment.



### **Renovated Commercial/Civic:** The Durrant Building, Dubuque



The Durrant Building development was selected to receive the award for Best Renovated Commercial Development due to The Durrant Groups dedication to staying in the Port of Dubuque and utilizing sustainable building practices.



Durrant Building Award Presentation: Gordy Mills, Erv Klaas, Mary Ellen Miller, Kevin Eipperle, LaVon Griffieon



## 2009 Best Development Award Winners

### **Renovated Residential:** Westfield Avenue Lofts, Waterloo

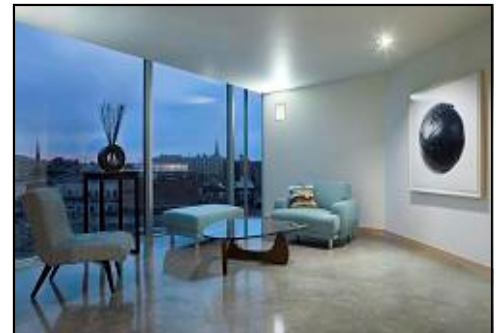
The Westfield Lofts development was selected to receive the award for Best Renovated Residential Development because it is the first historical residential renovation project in downtown Waterloo and is a spark that will hope to encourage future revitalization for the downtown area.



### **Mixed Use:** Plaza Towers, Iowa City



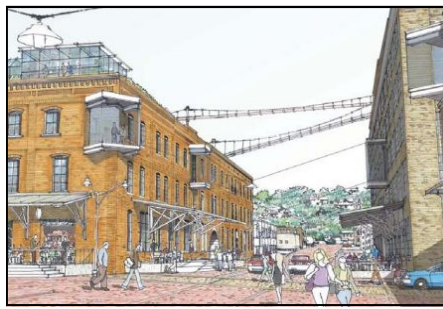
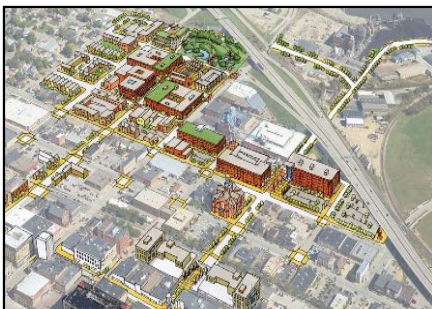
The Plaza Towers development was selected to receive the award for Best Mixed Use Development due to their success at transforming a Brownfield to a vibrant mixed-use facility that has enhanced the quality of life in Iowa City.

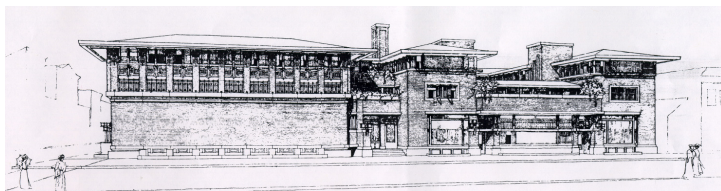


CUNNINGHAM  
GROUP

### **Leadership:** Historic Millwork District Master Plan, Dubuque

The Historic Millwork District Master Plan was selected to receive the award for Best Leadership because it is a model for future communities in Iowa where historic preservation and sustainability can be combined on a grand scale to promote a higher quality of life.





### **The Historic Park Inn Hotel & City National Bank building**

designed by Frank Lloyd Wright, 1910  
Mason City, Iowa

Wright on the Park is a non-profit organization whose mission is to preserve and maintain The Historic Park Inn Hotel & City National Bank building in downtown Mason City. Wright on the Park owns both buildings. The buildings were placed on the National Register of Historic Places in 1972.

Mr. Wright designed six hotels during his long and productive career. The Historic Park Inn Hotel is his only remaining hotel in the world. The design served as a prototype for his more famous Imperial Hotel, Tokyo, Japan (1915), which was demolished in 1968.

The City National Bank was designed as a secure “strong box” with natural lighting achieved through clerestory windows and skylights. The bank building suffered extreme alteration in the mid 1920s. The hotel ceased functioning as a hotel in 1972.

Typical of Wright’s early Prairie School work, both buildings were richly enhanced with custom stained glass, terra cotta details, bronze grille work, light fixtures and sculpture. Fortunately much of that original artwork has been retained or returned and restored.

The goal of the restoration is to return both buildings to their original exterior facades. In addition, the continued preservation of the structures is to be achieved through development of a financially viable boutique hotel. The entire complex will be utilized for hotel functions with a total of twenty-two suites in the hotel and six suites on the upper floor of the bank portion. The main floor of the bank area will provide a community multi-purpose space for special events such as banquets, weddings, conferences and other uses.

The restoration project budget is \$18 million. To date construction funding has been secured through a Vision Iowa award, Save America’s Treasures grants, various state of Iowa legislative appropriations, reserved state and federal historic tax credits, area private foundations, corporate grants and private donations. The final link in this important financial chain is a recent allocation of New Markets Tax Credits.

With its prominent location in Mason City, The Historic Park Inn Hotel is viewed as the centerpiece for revitalization of the downtown area.

Wright on the Park is a membership organization and memberships and donations are encouraged and gladly welcomed for the ongoing preservation of these important historic properties. Naming rights are also currently available for a limited time. For additional information check [www.wrightonthepark.org](http://www.wrightonthepark.org) or you may contact Ann MacGregor, Executive Director at [director@wrightonthepark.org](mailto:director@wrightonthepark.org).

## ***Cedar Falls Council Passes Flood Ordinance***

On Monday, January 14, 2010, the Cedar Falls City Council passed a new ordinance impacting development on flood plains. This was a revised flood plain ordinance and Councilman Tom Hagarty successfully suspended the rule requiring three separate readings. Thus, the ordinance was passed in one meeting along with a 12-member task force that will review how the ordinance will work and recommend any changes going forward. The task force will review individual concerns, as well as how the ordinance affects the broader community.

City leaders anticipate that the new ordinance will have some unexpected consequences. One of the main components raises the level for base flood protection from the 500-year level to the 100-year level. Another requires homes to be elevated above the 500-year flood level (versus the 100-year level). There are also more restrictions on dirt or other fill used to elevate new homes and prohibits removal of buildings already elevated.

Rob Hogg, D-Cedar Rapids will be one of many legislators pushing for a statewide law similar to the Cedar Falls ordinance. Hogg believes that regulations have not been restrictive enough to prevent future flooding and associated damages. Susan Jenkins from the Rebuild Iowa office expects interest from other Iowa cities to follow suit and pass similar measures.

There were mixed reactions to the Cedar Falls ordinance with residents whose home suffered damage in the 2008 flood supporting it, while others wanting to build new development on the flood plain were opposing it since no new development can occur.

The ordinance applies to the entire city of Cedar Falls and not just to flood-prone areas.

#### **WEBSITES OF INTEREST**

[www.practicalfarmers.org](http://www.practicalfarmers.org)

[www.smartgrowthamerica.org](http://www.smartgrowthamerica.org)

[www.farmlandinfo.org](http://www.farmlandinfo.org)

[www.inhf.org](http://www.inhf.org)

[www.treesforever.org](http://www.treesforever.org)

[www.iaenvironment.org](http://www.iaenvironment.org)

[www.leopold.iastate.edu](http://www.leopold.iastate.edu)

Visit [www.1000friendsofiowa.org](http://www.1000friendsofiowa.org) to view the full list of like minded organizations, and if you have suggestions for additional links, please email [kfoi@1000friendsofiowa.org](mailto:kfoi@1000friendsofiowa.org)!

***Iowa Food Production Statistics continued from page 3***

6. The value of the 2007 Iowa corn crop was \$6 billion.

7. Iowa had:

215,000 farms in 1940  
183,000 farms in 1960  
119,000 farms in 1980  
95,000 farms in 2000  
88,600 farms in 2006

**Iowa lost 126,400 farms, or 58.8%, in 66 years.**

The census defines a farm as any operation selling \$1000 or more of agriculture products per year.

8. In 2007 the average size of an Iowa farm was 331 acres, down from 355 acres in 2005.

In 2007

the average size of a U.S. farm was 418 acres, down from 444 acres in 2005

***The value of the 2007 Iowa corn crop was \$6 billion.***

9. In 2002 the number of Iowa farms with 2000+ acres grew by 58%. In 2002 the number of Iowa farms with 500-999 acres dropped by 13.6%.

10. **41.2%** of Iowa farms are between 1-99 acres.  
**38.1%** of Iowa farms are between 100-499 acres.  
**12.7%** of Iowa farms are between 500-999 acres.

11. Iowa's **total acres in cropland** in 2007 were **26,316,332 acres**, compared to 27,153,291 acres in 2002, and down from 27,713,041 acres in 1997.

12. Iowa had 34.8 million acres of farmland in 1950.  
Iowa had 32.5 million acres of farmland in 2000.  
Iowa had 30.7 million acres of farmland in 2007.  
Iowa lost **4.1 million acres** of Iowa farmland in **57 years**.  
Almost **½ of that amount**, 1.8 million acres, was lost in the **past decade** between 2000-2007.

13. A 1998 Iowa State University study showed that **88% of all recent growth** in Iowa occurred **outside city limits** while **50% of the land inside our city limits is undeveloped**.

14. In 2007, **38.6%** of Iowa farms reported sales of less than \$9,999

**15.3%** reported \$10,000-\$49,999 in sales  
**10.6%** reported \$50,000-\$99,999 in sales  
**25.4%** reported \$100,000-499,999 in sales  
**10.2%** reported more than \$500,000 in sales

Nationally, 40.5% had less than \$2,500 in sales in 2007

15. Iowa reported **136,068 farm operators** in 2007. Of these operators, **24.2% are women**, with **8,452 women** as the principle operator, up from 6,169 in 2002. Nationally, 31.6% of farm operators are women, up from 30% in 2002.

16. In 2007:

83.4% of the farms in Iowa were operated by individuals & families.

7.5% of the farms in Iowa were partnerships

6.5% of the farms in Iowa were family corporations

5% of farms were owned by non-family corporations

17. 86.5% of the farms in the U.S. are operated by individuals and families

18. The **average age** of the Iowa farmer was **56.1** years old in 2007, up from 54.3 in 2002. Nationally, the average age of a farmer is 57.1 years old.

19. **78%** of Iowa's farmland is **owned by people over 55 years of age**.

29% are over 75 years old.

27% are 65-74 years old.

22% are 55-64 years old.

A conservative estimate indicates approximately **15.75 million** acres of our 31.5 million acres that Iowa has in farms (2006 Census Data) **will change hands in the next 20 years**.

20. In 2002, 52.4% of farmers stated farming as their primary occupation, down from 68.3% in 2002.

***A conservative estimate indicates approximately 15.75 million acres of our 31.5 million acres that Iowa has in farms (2006 Census Data) will change hands in the next 20 years.***

*This information was taken from data collected by the USDA 2007 Census of Agriculture, the USDA 2002 Census of Agriculture, Iowa Ag Statistics 2007, Mike Duffy, ISU Extension, and "A Geography of Taste", Leopold Center for Sustainable Agriculture*

**iRIDE Study continued from page 1**

This study lays a factual base that we hope our legislators will take seriously when making decisions. Another legislatively-funded and much touted study, "The 1998 Pilot Land Use Inventory" spelled out the need for comprehensive planning, farmland protection and better land management practices. Twelve years later little headway has been made by our legislature. We hope that the funding paid for these legislative studies is not wasted on research that is ignored in the end.

***2010 Legislative Session Is Under Way!  
Stay Informed With Public Policy Up-  
dates & Action Alerts!***

As bills concerning land use issues come up during the legislative session 1000 Friends strives to keep you informed in a timely manner. We will keep you informed through our Public Policy Updates and when we need your help to contact policy makers, we will send an Action Alert with our position. If you have changed your e-mail address or want to be certain you are on our listserv, please contact our office at 515-288-5364 or email [kfoi@1000friendsofiowa.org](mailto:kfoi@1000friendsofiowa.org). Don't forget to add [kfoi@1000friendsofiowa.org](mailto:kfoi@1000friendsofiowa.org) to your contact list to make certain the emails from our office aren't being filtered as spam! We look forward to your help in moving smart growth forward in Iowa.

**Share Events, Successes,  
and Other News From  
Your Community!**

Were any land use resolutions passed at your caucus? Please e-mail us the resolution, [kfoi@1000friendsofiowa.org](mailto:kfoi@1000friendsofiowa.org), and let us know what was passed!

Do you have an idea for a story? Do you have an event in your area pertaining to land use that you would to publicize for free? The *Land Use Bulletin* is available for any of our members to submit articles, announcements or photos for consideration.